

# VINTAGE CHRISTMAS TABLE RUNNER & PLACEMATS

Designed by Anja Townrow using the  
One Runner: 13" x 46" (33 x 117cm)  
Four Placemats: 16" x 11" (41 x 28cm) each



**makower uk**  
*The Henley Studio*

118 Grey's Road, Henley on Thames, Oxon RG9 1QW  
www.makoweruk.com Email: info@makoweruk.com

*Andover  
Fabrics*

www.andoverfabrics.com



# VINTAGE CHRISTMAS TABLE RUNNER & PLACEMATS

Designed by Anja Townrow for Makower Uk

One Runner: 13" x 46" (33 x 117cms)

Four Placemats: 16"x 11" (41 x 28cms) each

## Fabric Requirements

Fabric	Amount	First Cut	2nd Cut	Position
Vintage Stripe 884/1	1.50 metres	Cut 2½" wide bias strips first. Length needed 320".	Cut 56 Template A	Binding Wreaths
Red Curl 936/R6	0.50 metres	Cut 56 Template A Cut 36 Template B		Wreaths Berries
Green Curl 936/G9	0.30 metres	Cut 15 Template H Cut 15 Template H reversed Cut 7 Template C		Holly Leaves Centre Circles
Cream Dot 939/Q	1.30 metres	Cut a piece 13½" x 46½" parallel to the selvage	Cut four pieces each 16½" x 11½"	Backgrounds
	1.30 metres	Cut a piece 13½" x 46½" parallel to the selvage	Cut four pieces each 16½" x 11½"	Backing
<b>Extras</b>				
Wadding 1.30 x 1.10 metres				
Bondaweb or Heat 'n Bond <i>Light</i> 1.50 metres				
Stitch 'n Tear 1.30 metres				
Baking parchment/Silicon paper for pressing				
<b>Optional Extras</b>				
Gold thread for Applique and quilting				
Thick green thread for stems				

## Sewing instructions

### WREATHS

Make 3 Wreaths for the Runner, and 4 wreaths for the placemats.

To make 1 wreath:

1. Cut 8 red and 8 striped fabric pieces using Template A. Note that there are only seam allowances at the sides of Template A. For the Striped fabric fussy-cut 8 identical pieces from the fabric for best effect (see illustration).
2. Lay the pieces out to form the wreath, join a striped A piece to a red A piece along the side edges to make pairs, then join the pairs, then make halves and finally join the halves. (Diagram 1)
3. Press all seams to one side.

## BACKGROUNDS

¼" seam allowances are included in templates and measurements.

### Runner

1. Cut a piece measuring 13½" x 46½" parallel to the selvage.
2. To round off the ends: fold the strip in half along the length, then along the width. Place the curved Template R on this folded quarter, with the curve near the open edges.
3. Match the side edges!
4. Cut along the curve.

### Place mats

1. Cut 4 pieces measuring 16½ x 11½ inches.
2. Fold and press into quarters.
3. Place the curved Template P on the folded fabric, with the curve at the open edges.
4. Cut along the curve.

## APPLIQUÉ PIECES

### Holly Leaves

1. Place Bondaweb ( or Heat 'n Bond *Light* ) over Templates H and H reversed.
2. Trace 15H and 15 Hrev.
3. Cut out the Bondaweb paper pieces including a small allowance.
4. Iron the Bondaweb pieces onto the back of the Green fabric. Let cool.
5. Now cut on the line.

### Berries

1. Trace 36 small circles B onto Bondaweb:  
TIP: it is easier to use the end of a reel of cotton or a coin to trace around; just find one that matches the size of the circle!
2. Iron onto the back of the Red fabric and cut out as before.

### Wreaths

1. Place a sheet of baking parchment or Silicon paper on the ironing board.
2. Place a pieced wreath on top, wrong side uppermost.
3. Place a piece of Bondaweb (10 ½" x 10 ½") over the wreath, bubbly side down, smooth side uppermost.
4. Press with a hot iron over the whole area.
5. Let cool. Carefully pull the baking parchment paper away from the wreath and Bondaweb.
6. Now cut around the edges of the wreath.

### Centre Circles

1. Trace 7 large circles C, cut and iron as before, using the Green fabric.

## ASSEMBLING THE RUNNER

1. Place the background piece on a large pressing pad or folded towel.
2. Use 3 Wreaths, 7 H, 7 Hrev, 12 Berries, 3 large circles C.
3. Remove the backing papers and arrange the pieces onto the background (see illustration).
4. Start with the Wreath in the centre and work from there out placing the remaining wreaths on the background at equal distances.
5. Place the reverse Holly Leaves as a mirror image to the original Holly leaves.
6. Bond the pieces into place with a hot iron once you are satisfied with the arrangement.

### ASSEMBLING THE PLACEMATS

1. For each placemat use 1 Wreath, 2H, 2Hrev, 6 Berries and 1 Large C.
2. Arrange and bond as before.

### APPLIQUÉING

1. Place the Stitch 'n Tear under the work.
2. Use a decorative thread to zigzag (stitch length 1, width 2¾) all around the shapes.
3. This project was sewn with Gold metallic thread in the top, 60 wt cotton in the bobbin and a #14 Schmetz Top Stitch needle.
4. Tie off thread ends at the back as you go along.

### EMBROIDERING THE STEMS

1. With a wash-away marker, join the Holly leaves and berries with hand-drawn lines, following the illustration as a guide.
2. Zig-Zag over these lines with a thick thread, or use a chain stitch by hand.
3. Remove Stitch'nTear

### LAYERING AND QUILTING

#### Runner

1. Tape the backing, wrong side facing up, to a tabletop or floor.
2. Smooth the wadding over.
3. Smooth the Runner over, right side up.
4. Secure all layers with curved safety pins.
5. Machine quilt with a walking foot and feet dogs engaged, invisible thread in the top, 60 wt cotton in the bobbin, stitch length 4. Quilt around the edge of all the main appliqué shapes to stabilize the quilt.
6. Quilt parallel lines in the Wreaths with Gold thread.
7. With a darning foot and feed dogs down, decorative thread in the top, bobbin as before, quilt freehand swirls in the background and in the Circles C.
8. Repeat for the **Placemats**.

### BINDING

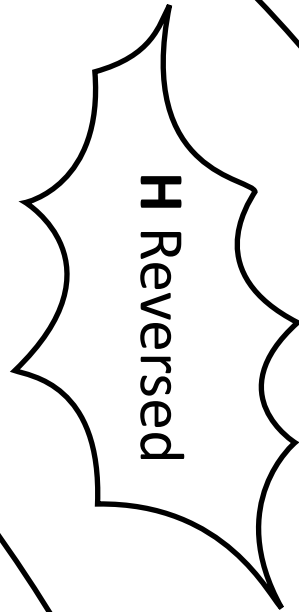
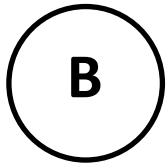
1. Trim the edges of the **Runner**.
2. Cut Bias strips 2½" wide.
3. Join lengths to match the circumference of the Runner, plus a little extra: 120".
4. Press wrong sides together.
5. Place raw edges even with trimmed edges of quilt; stitch all around.
6. Neaten beginning and end by mitering or as preferred.
7. Stitch again to re-inforce, then clip at the curves.
8. Blindstitch the binding to the backing, leaving a ¼" binding to show on the front of the runner.
9. Press under a wet cloth to make the Runner lie flat, leave to dry in place.
10. Repeat for the **Placemats**, length needed for binding each placemat: 48"

*Congratulations and well done!*

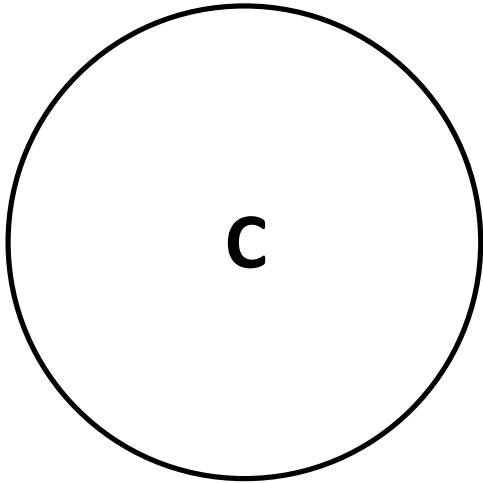
Side edge

Runner Cutting guide

R



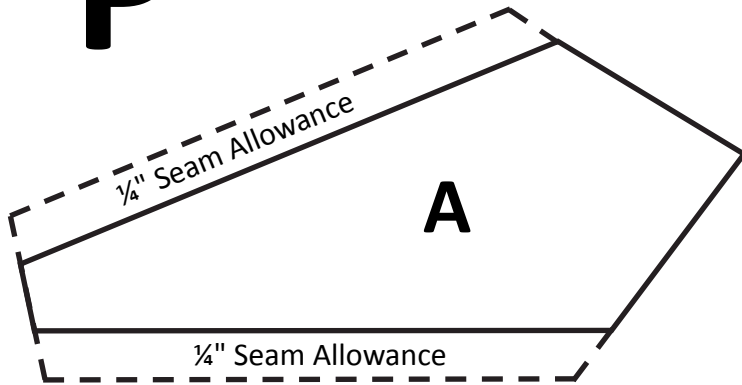
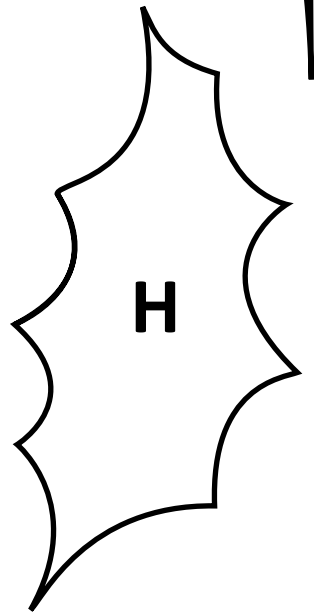
Centre fold →



Place mat cutting guide

P

Fold



Fold





4/880 LABELS (\* NOT TO SCALE 20% OF ACTUAL SIZE)



4/881 POSTCARDS



4/883R TREES



4/883Q TREES



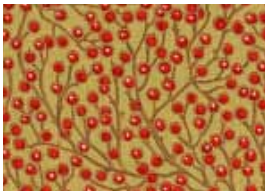
4/882R ROSE



\*4/884 STRIPE



4/882Q ROSE



4/885G BERRIES



4/886R MISTLETOE



4/888 PINSTRIPE



4/886Q4 MISTLETOE



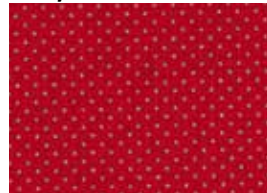
4/885Q BERRIES



4/886Q2 MISTLETOE



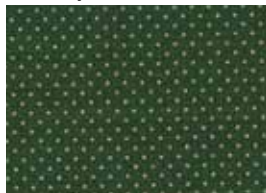
4/887 HOLLY



4/939R6 METALLIC DOT



4/939G5 METALLIC DOT



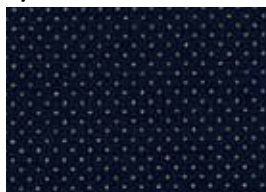
4/939G9 METALLIC DOT



4/939R8 METALLIC DOT



\*4/939Q METALLIC DOT



4/939B9 METALLIC DOT



4/939X METALLIC DOT

Vintage Runner & four Place Mats  
by Anja Townrow  
Available to download free  
www.makoweruk.com

All images 50% of actual size unless otherwise stated

\*design used in projects, additional fabrics required 4/936R6 & G9 Metallic Curl from Christmas Novelty Collection